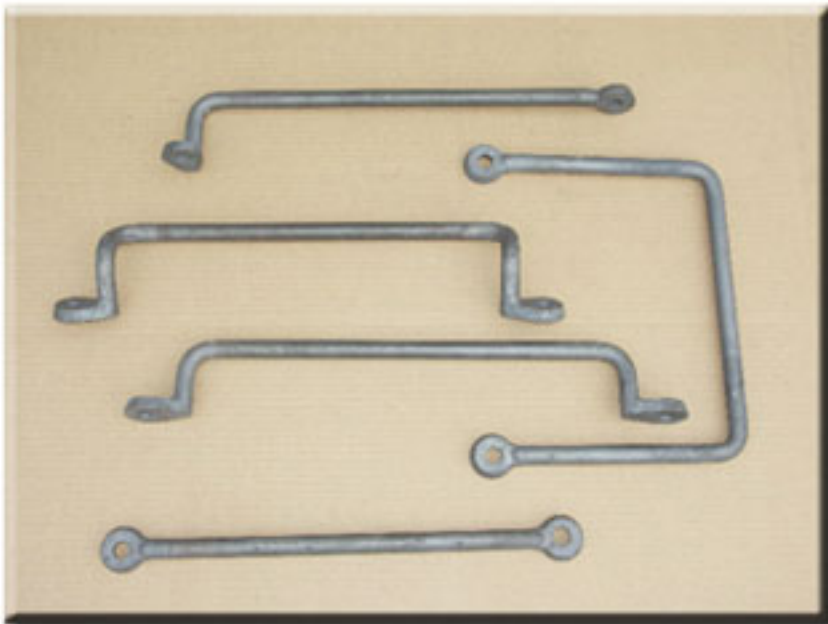




J - HANDHOLDS

To Order:
Call: 800-521-2151
Fax: 724-662-0539
E-mail: sales@parailcar.com

J - HANDHOLDS



J - HANDHOLDS

PRC accepts any size or quantity to fill all of your handhold needs. Please fill in the required dimensions on the following drawings and submit to the sales staff.

CALL PRC TODAY!!

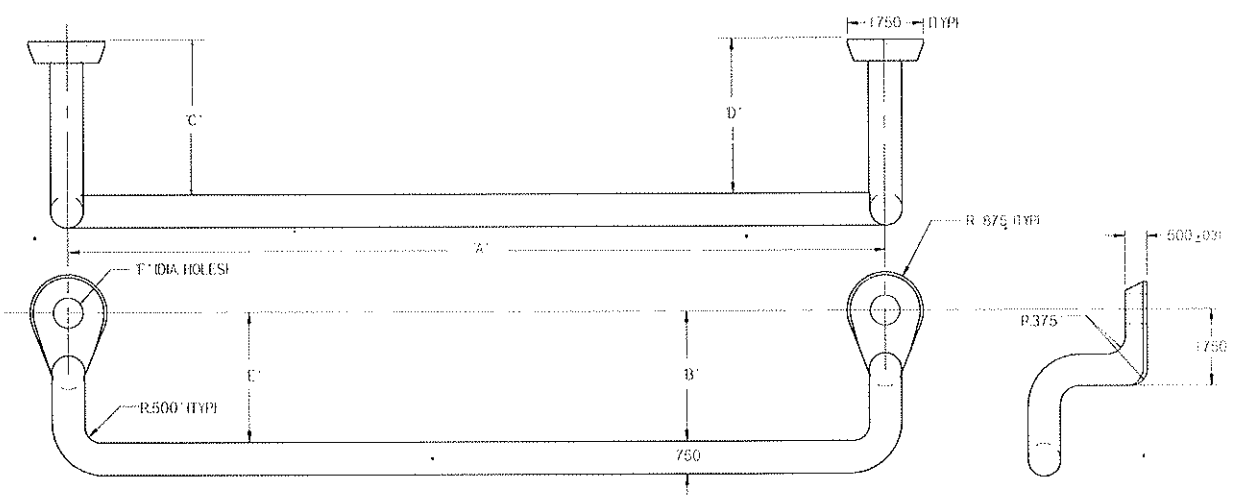
FORGE FACILITY



PRC Part #: FORGE

Pennsylvania Rail Car Co. owns a state-of-the-art forge shop at its main plant. PRC is fully capable of handling all of your handhold needs.

CALL PRC TODAY!!



DIMENSION	
A	
B	
C	
D	
E	
F	

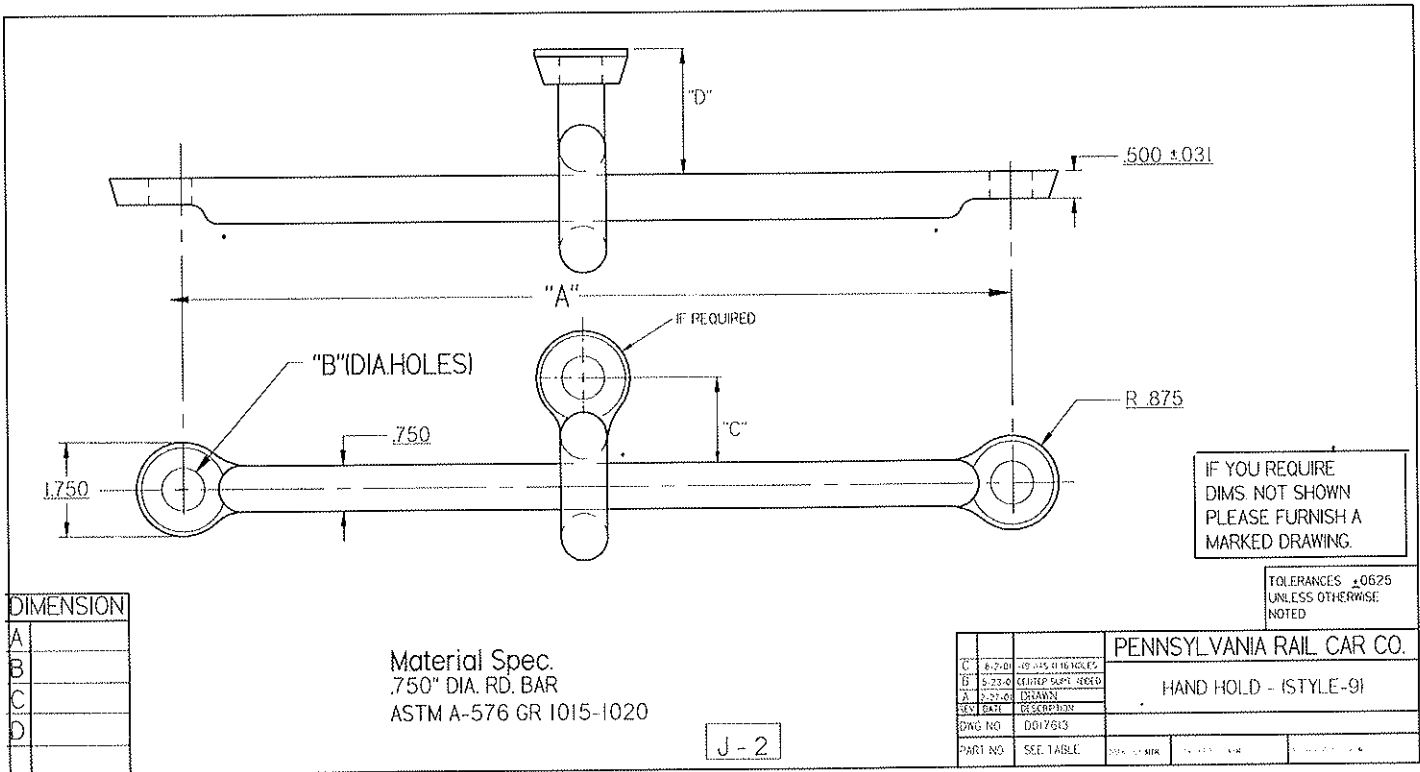
MINIMUM "B - E" DIMENSIONS ARE 3" TO ASSURE CONFORMANCE TO SAFETY APPLIANCE REGULATIONS

MATERIAL SPEC.
 .750" DIA. ROUND BAR
 ASTM A-576 GR.1015-1020

J-2

PENNSYLVANIA RAIL CAR CO	
HANDHOLD - STYLE 21	
DATE	APR 19 1953
BY	J. A. 9
CHECKED	
APPROVED	
REVISIONS	

TOLERANCE ±.0625" UNLESS OTHERWISE NOTED



DIMENSION	
A	
B	
C	
D	

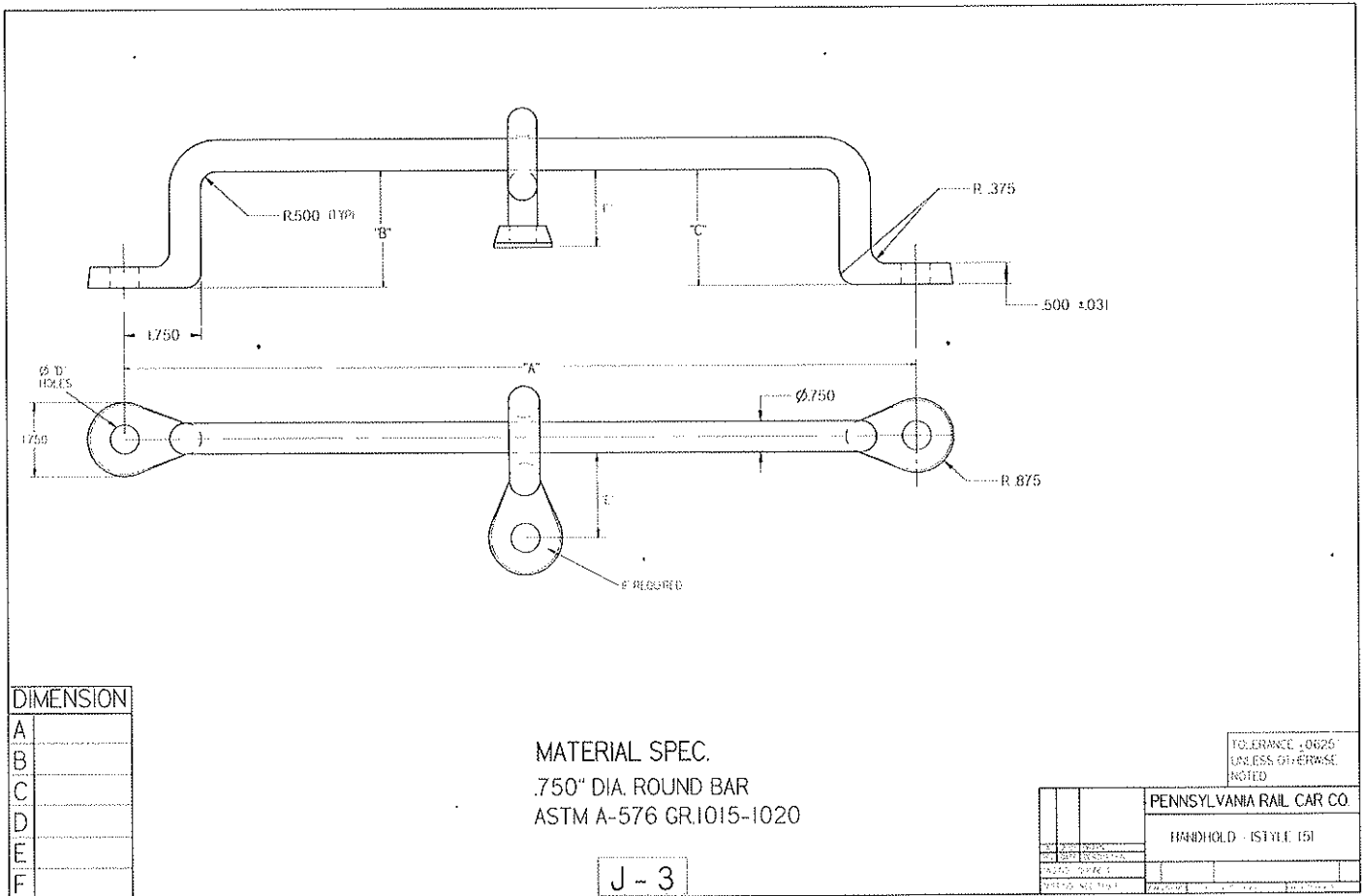
Material Spec.
 .750" DIA. RD. BAR
 ASTM A-576 GR 1015-1020

J-2

IF YOU REQUIRE
 DIMS NOT SHOWN
 PLEASE FURNISH A
 MARKED DRAWING.

TOLERANCES ±.0625
 UNLESS OTHERWISE
 NOTED

PENNSYLVANIA RAIL CAR CO.	
HAND HOLD - ISTYLE-91	
REV	DESCRIPTION
1	ISSUED
2	REVISED
3	REVISED
4	REVISED
5	REVISED
6	REVISED
7	REVISED
8	REVISED
9	REVISED
10	REVISED
11	REVISED
12	REVISED
13	REVISED
14	REVISED
15	REVISED
16	REVISED
17	REVISED
18	REVISED
19	REVISED
20	REVISED
21	REVISED
22	REVISED
23	REVISED
24	REVISED
25	REVISED
26	REVISED
27	REVISED
28	REVISED
29	REVISED
30	REVISED
31	REVISED
32	REVISED
33	REVISED
34	REVISED
35	REVISED
36	REVISED
37	REVISED
38	REVISED
39	REVISED
40	REVISED
41	REVISED
42	REVISED
43	REVISED
44	REVISED
45	REVISED
46	REVISED
47	REVISED
48	REVISED
49	REVISED
50	REVISED
51	REVISED
52	REVISED
53	REVISED
54	REVISED
55	REVISED
56	REVISED
57	REVISED
58	REVISED
59	REVISED
60	REVISED
61	REVISED
62	REVISED
63	REVISED
64	REVISED
65	REVISED
66	REVISED
67	REVISED
68	REVISED
69	REVISED
70	REVISED
71	REVISED
72	REVISED
73	REVISED
74	REVISED
75	REVISED
76	REVISED
77	REVISED
78	REVISED
79	REVISED
80	REVISED
81	REVISED
82	REVISED
83	REVISED
84	REVISED
85	REVISED
86	REVISED
87	REVISED
88	REVISED
89	REVISED
90	REVISED
91	REVISED
92	REVISED
93	REVISED
94	REVISED
95	REVISED
96	REVISED
97	REVISED
98	REVISED
99	REVISED
100	REVISED



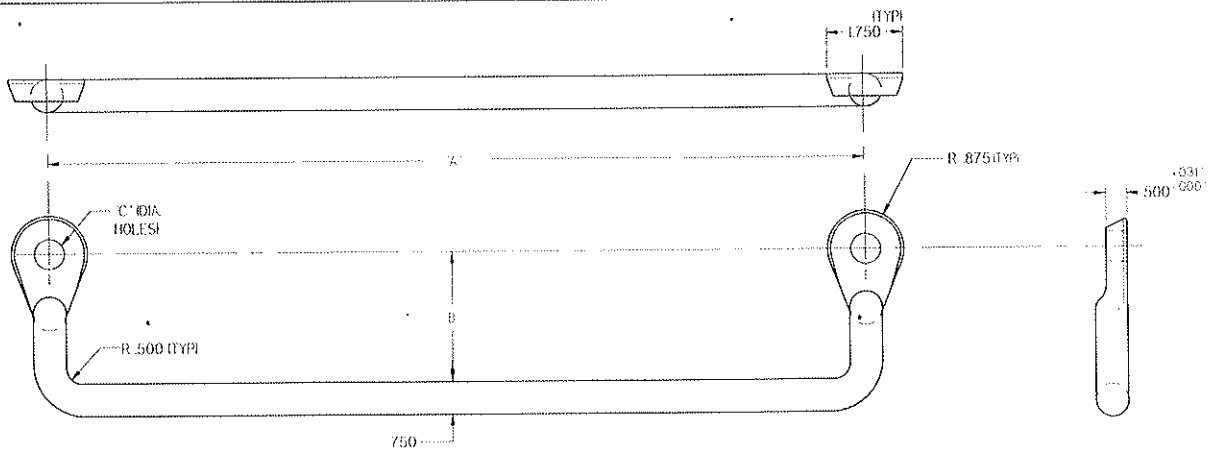
DIMENSION	
A	
B	
C	
D	
E	
F	

MATERIAL SPEC.
 .750" DIA. ROUND BAR
 ASTM A-576 GR.1015-1020

J-3

PENNSYLVANIA RAIL CAR CO.	
HANDHOLD - (STYLE 15)	
DATE	
BY	
CHECKED	
APPROVED	

TOLERANCE .0625"
 UNLESS OTHERWISE
 NOTED



MATERIAL SPEC.
 .750" DIA. ROUND BAR
 ASTM A-576 GR.1015-1020

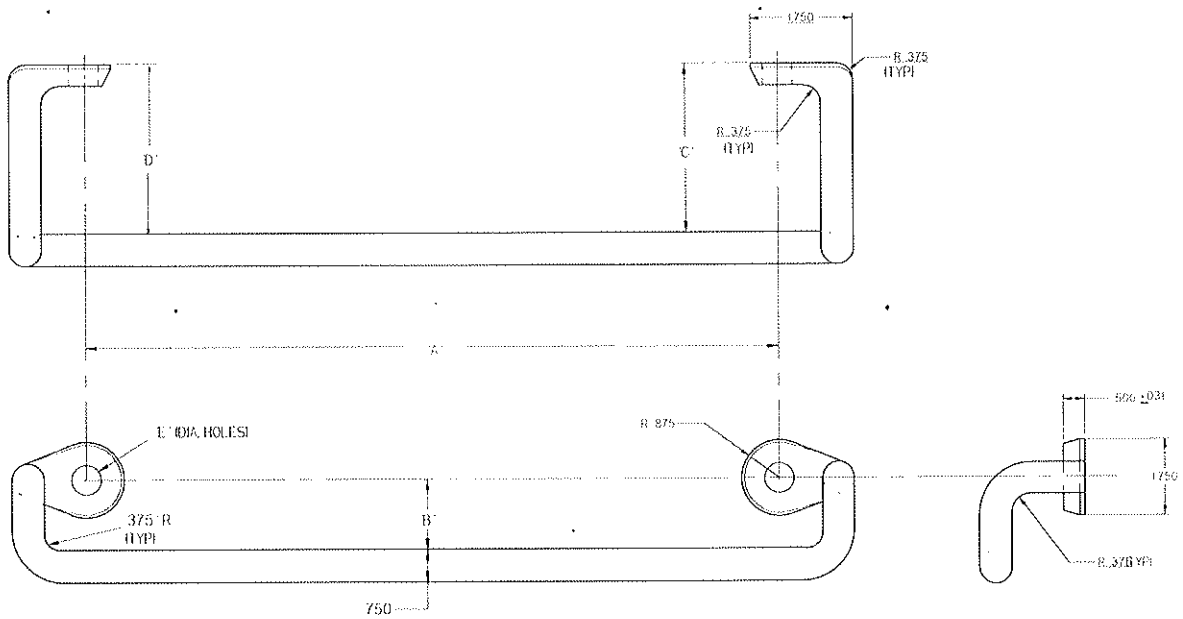
NOTE
 IF YOU REQUIRE DIMS.
 NOT SHOWN PLEASE
 FURNISH MARKED
 DRAWING

TOLERANCE .0025"
 UNLESS OTHERWISE
 NOTED

DIMENSION	
A	
B	
C	

J - 4

PENNSYLVANIA RAIL CAR CO.	
HANDHOLD - (STYLE 18)	
DATE	BY
2/22	JAC
2/22	JAC



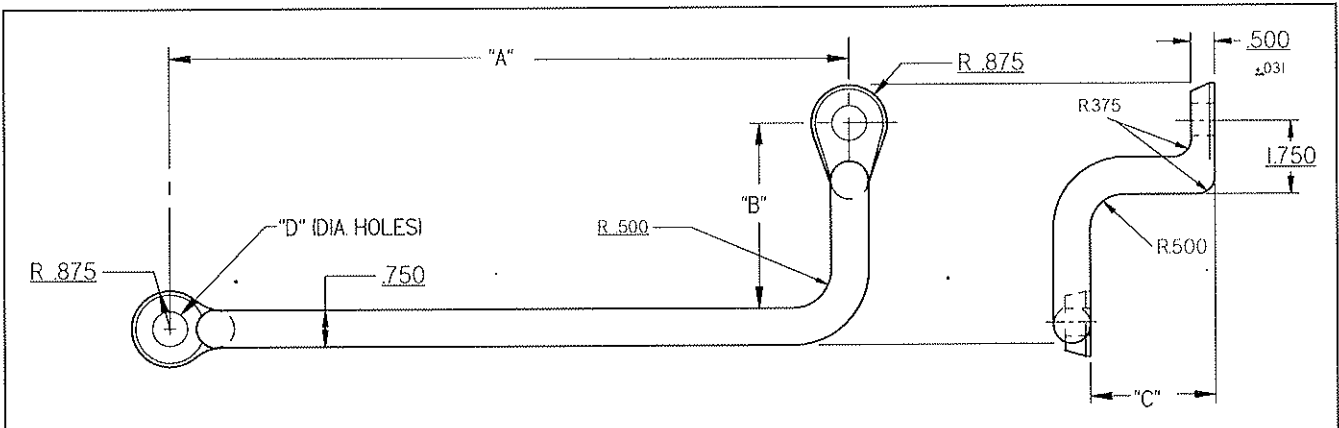
MATERIAL SPEC.
 .750" DIA. ROUND BAR
 ASTM A-576 GR.1015-1020

DIMENSION	
A	
B	
C	
D	
E	

J - 5

TOLERANCE .0625"
 UNLESS OTHERWISE
 NOTED

PENNSYLVANIA RAIL CAR CO.	
HANDHOLD - DOUBLE BEND (INSIDE MOUNT)	
DATE	10-25-55
BY	J. J. J.
CHECKED	
APPROVED	



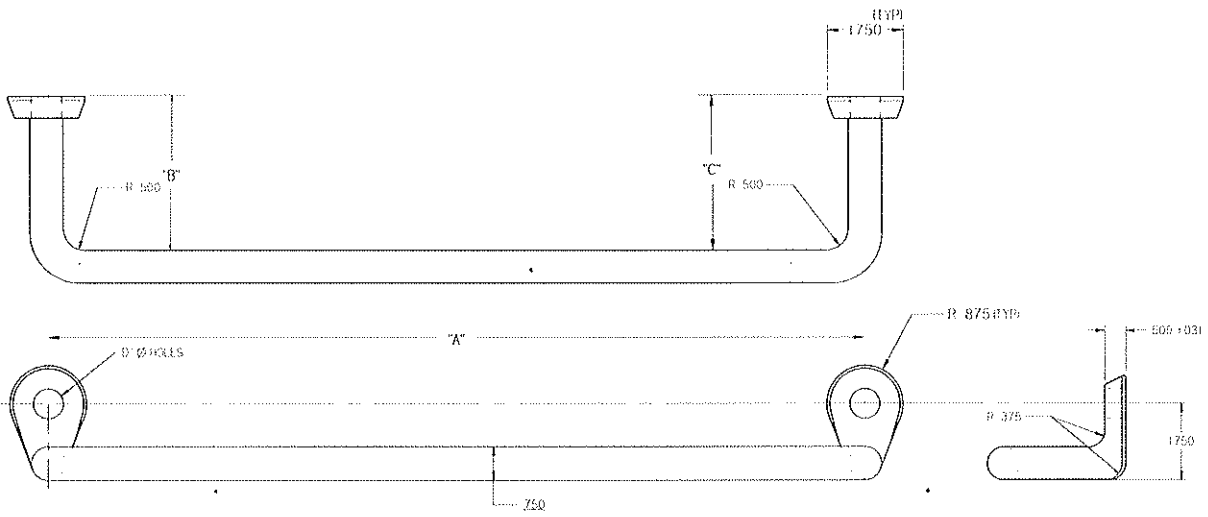
Material Spec.
 .750" DIA. RD. BAR
 ASTM A-576 GR 1015-1020

TOLERANCES $\pm .0025$
 UNLESS OTHERWISE
 NOTED

DIMENSION	
A	
B	
C	
D	

J-7

PENNSYLVANIA RAIL CAR CO.			
HAND HOLD			
ISTYLE - 261			
REV	DATE	DESCRIPTION	
A	8-13-01	DRAWN	
DWG NO	DDB7853		
PART NO	SEE TABLE	DESIGNED BY	SR
		CHECKED BY	SR
		AUTHORIZED BY	SR

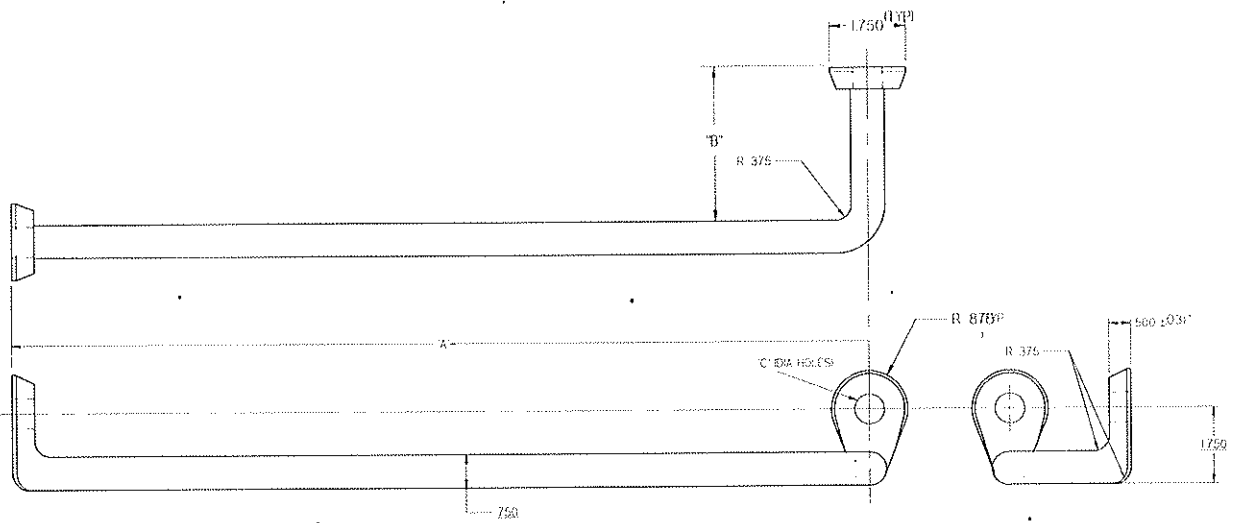


MATERIAL SPEC.
 .750" DIA. ROUND BAR
 ASTM A-576 GR.1015-1020

DIMENSION	
A	
B	
C	
D	

J - 8

PENNSYLVANIA RAIL CAR CO	
HANDHOLD - (STYLE-II)	
TOLERANCE +.0025" UNLESS OTHERWISE NOTED	

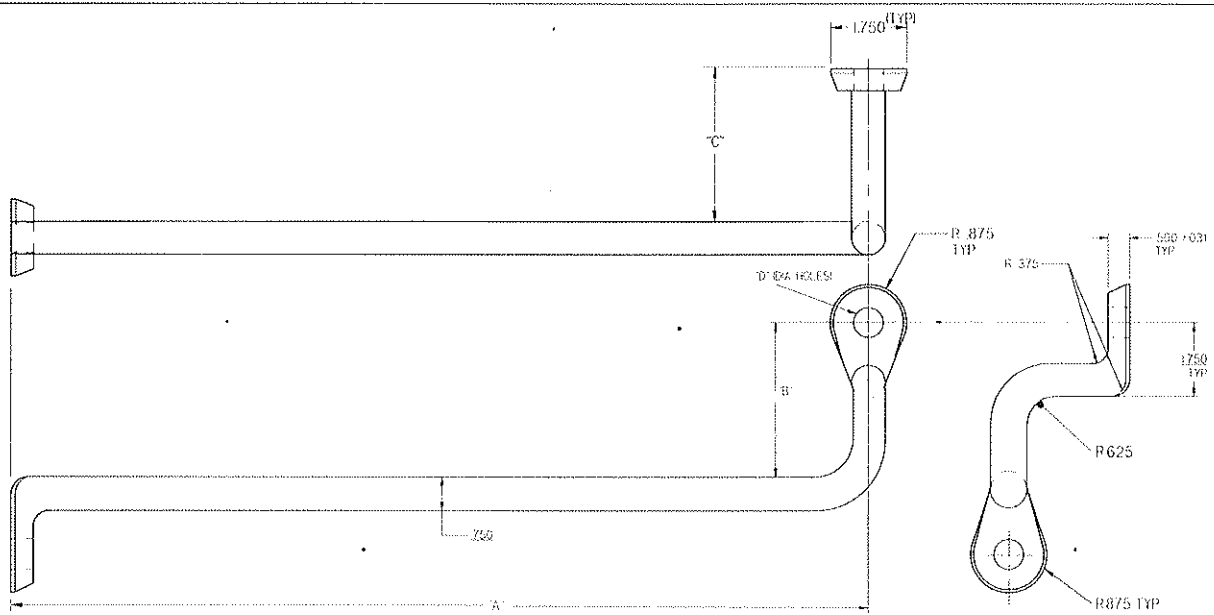


MATERIAL SPEC.
 .750" DIA. ROUND BAR
 ASTM A-576 GR.1015-1020

DIMENSION	
A	
B	
C	
AS SHOWN	
REVERSE	

J-9

TOLERANCE .0625" UNLESS OTHERWISE SPECIFIED	
PENNSYLVANIA RAIL CAR CO.	
HANDHOLD	
DATE	
BY	
CHECKED	
APPROVED	



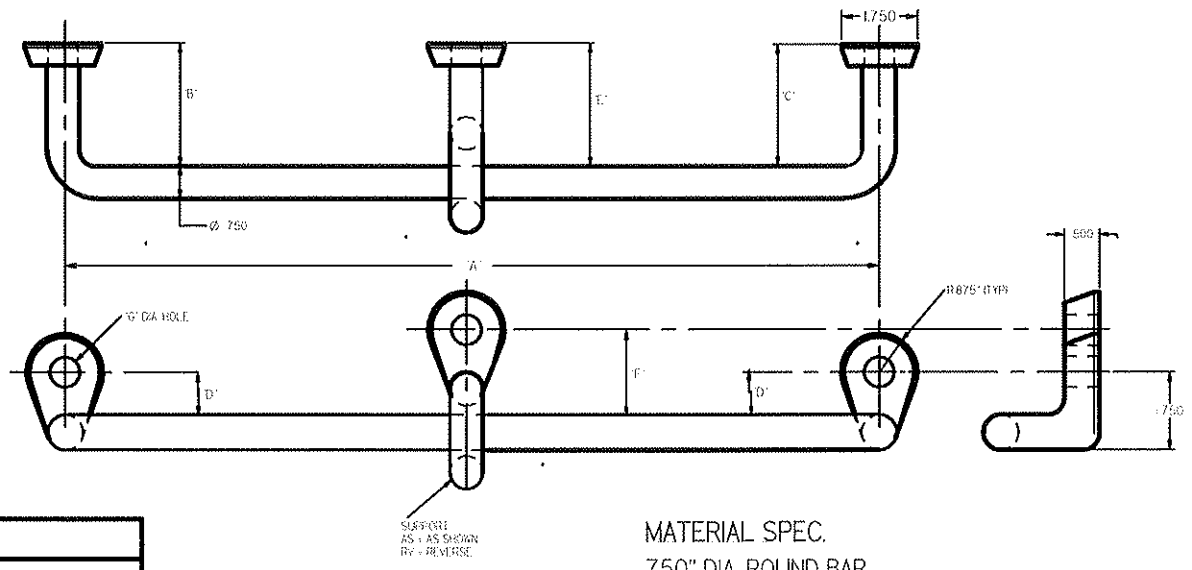
MATERIAL SPEC.
 .750" DIA. ROUND BAR
 ASTM A-576 GR.1015-1020

TOLERANCE ±.0625
 UNLESS OTHERWISE
 NOTED

DIMENSION	
A	
B	
C	
D	
AS SHOWN	
REVERSE	

J - 10

PENNSYLVANIA RAIL CAR CO.	
HANDHOLD	



MATERIAL SPEC.
 .750" DIA. ROUND BAR
 ASTM A-576 GR.1015-1020

NOTE
 IF YOU REQUIRE DIMS.
 NOT SHOWN PLEASE
 FURNISH MARKED
 DRAWING

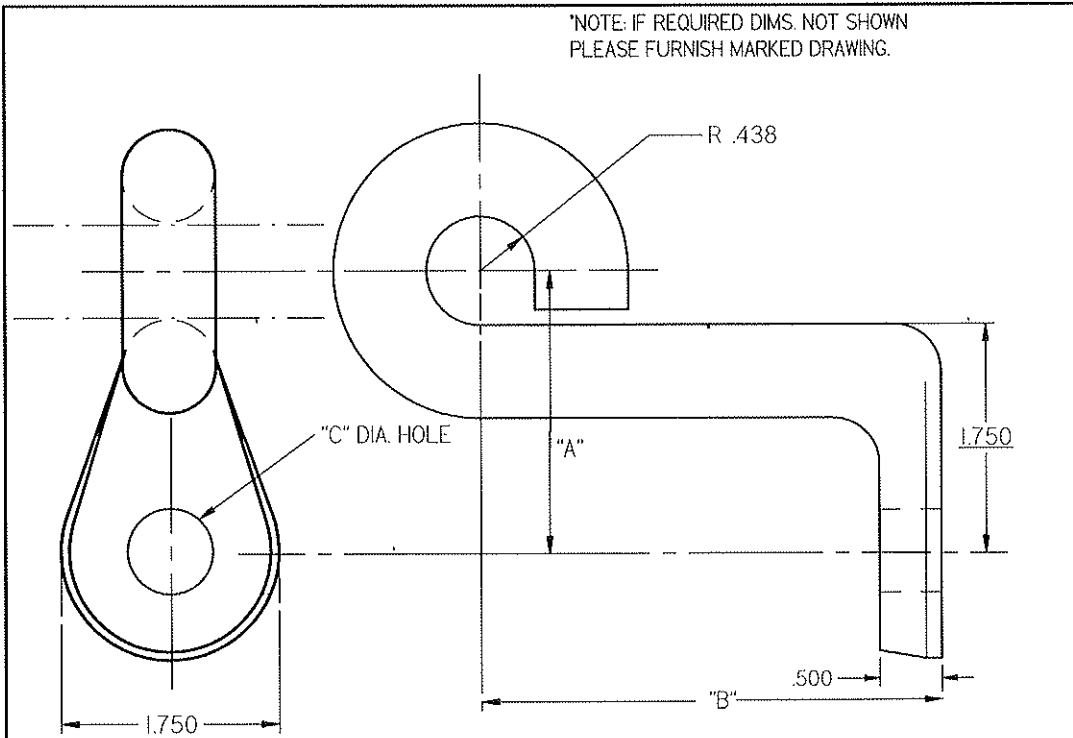
TOLERANCE .0025
 UNLESS OTHERWISE
 NOTED

PENNSYLVANIA RAIL CAR CO.	
HANDHOLD - SINGLE BEND w/CENTER SUPPORT	
REV	DATE

DIMENSION	
A	
B	
C	
D	
E	
F	
G	
SUPPORT	AS RV

PAGE J - II

*NOTE: IF REQUIRED DIMS. NOT SHOWN
PLEASE FURNISH MARKED DRAWING.

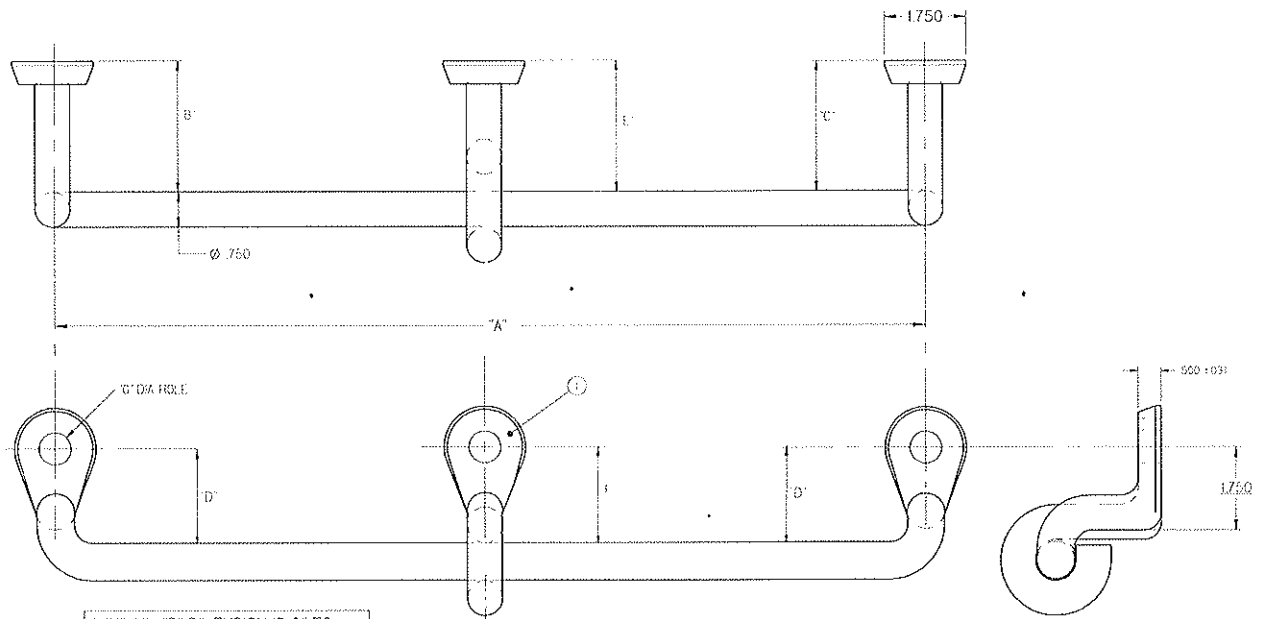


PART NO.	DM7A	DM8	DMC
D017737 1	2.14"	6.38"	1116"
D017737 1A	2.14"	6.38"	516"
D017737 2	2.14"	6.38"	1116"
D017737 3	2.14"	3.78"	1116"
D017737 4	2.14"	2.78"	1116"
D017737 5	3"	6"	1116"
D017737 6	2.38"	2.38"	1116"
D017737 6A	2.38"	2.38"	516"
D017737 7	2.14"	5.38"	1116"
D017737 8	2"	3.18"	1116"
D017737 9	2.14"	3.58"	516"
D017737 10	2.14"	3.38"	516"
D017737 11	2.14"	6"	1116"
D017737 12	2.78"	5.38"	1116"
D017737 13	2.14"	6.18"	1116"
D017737 14	2.14"	4.78"	1116"
D017737 15	2.78"	2.78"	1116"
D017737 16	3"	4.14"	1116"
D017737 17	2.38"	2.78"	516"
D017737 18	2.38"	2.58"	1116"
D017737 19	2.18"	3"	516"
D017737 20	3"	3.12"	1116"
D017737 21	2.18"	14.38"	1116"
D017737 22	2.18"	2.78"	1116"
D017737 23	2.14"	3.58"	1116"
D017737 24	2.14"	4.38"	1116"
D017737 25	2.14"	6.58"	1116"
D017737 26	2.14"	2.716"	516"
D017737 27	2.18"	6"	1116"
D017737 28	2.18"	4.12"	1116"
D017737 29	3.12"	5"	1116"
D017737 30	2.14"	12.38"	516"
D017737 31	2.58"	4.716"	1116"
D017737 32	2.38"	3.38"	1116"
D017737 33	2.18"	8.12"	516"
D017737 34	2.316"	8.12"	516"
D017737 35	2.14"	7.12"	1116"
D017737 36	3"	2.78"	516"
D017737 37	2.38"	3.38"	516"
D017737 38	2.78"	3.18"	516"
D017737 39	2.78"	3.38"	516"
D017737 40	3"	3.78"	1116"
D017737 41	2.38"	2.78"	1116"
D017737 42	2.18"	3.716"	516"
D017737 43	3"	4.316"	1116"
D017737 44	2.14"	3"	1116"
D017737 45	2"	7.38"	1116"
D017737 46	2.14"	5.78"	516"
D017737 47	3"	6.38"	1116"

MATL SPEC
.750"DIA. ROUND BAR
ASTM A-576
GR.1015-1020

PAGE J-13

		PENNSYLVANIA RAIL CAR CO.	
		HANDHOLD CENTER	
		SUPPORT (for .750" DIA.)	
REV	DATE	DESCRIPTION	
A	4-23-01	FIRST ISSUE	
DWG. NO.	D017737-CAT		
PART NO.	SEE TABLE	DRAWN BY MTR	CHECKED BY WSR
		AUTHORIZED BY WSR	



MINIMUM "D" DIMENSION IS 3" TO ASSURE CONFORMANCE TO SAFETY APPLIANCE REGULATIONS

MATERIAL SPEC.
.750" DIA. ROUND BAR
ASTM A-576 GR.1015-1020

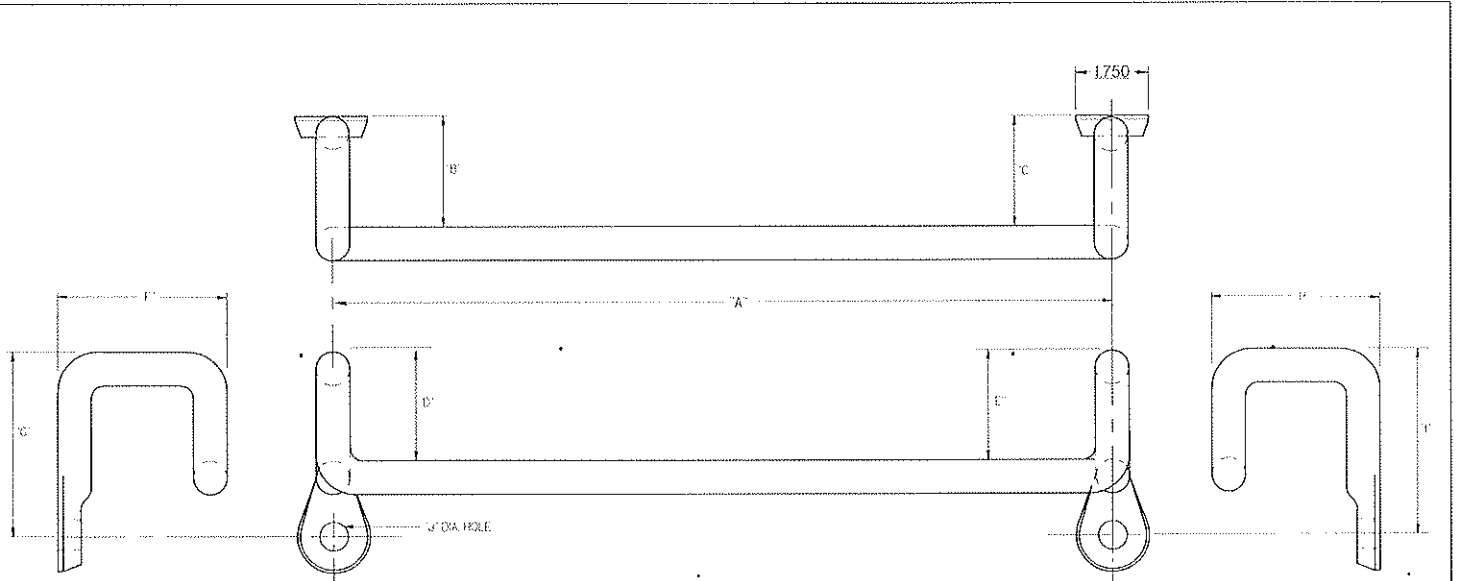
NOTE
IF YOU REQUIRE DIMS.
NOT SHOWN PLEASE
FURNISH MARKED
DRAWING

TOLERANCE .0025"
UNLESS OTHERWISE
NOTED

PART NO.	DIM "A"	DIM "B"	DIM "C"	DIM "D"	DIM "E"	DIM "F"	DIM "G"	ITEM#1
A017773-60S32	60"	2-1/2"	2-1/2"	2"	3"	2"	11/16"	D017737-32
A017773-60S16	60-1/2"	2-1/2"	2-1/2"	4-1/4"	2-1/2"	2-1/2"	11/16"	D017737-15
A017773-65S4	65"	2-1/2"	2-1/2"	4-1/4"	2-1/2"	1-7/8"	11/16"	D017737-4
A017773-67S4	67"	2-1/2"	2-1/2"	4-1/4"	2-1/2"	1-7/8"	11/16"	D017737-4
A017773-96	96"	3"	5"	3-1/2"	5"	1-1/2"	11/16"	D017737-12

PAGE J - 15

PENNSYLVANIA RAIL CAR CO	
HANDHOLD - DOUBLE BEND w/CENTER SUPPORT	
DATE	APPROVED
DESIGNED	CHECKED
DWG NO. A017773	
PART NO. SEE TABLE	



MATERIAL SPEC.
 .750" DIA. ROUND BAR
 ASTM A-576 GR.1015-1020

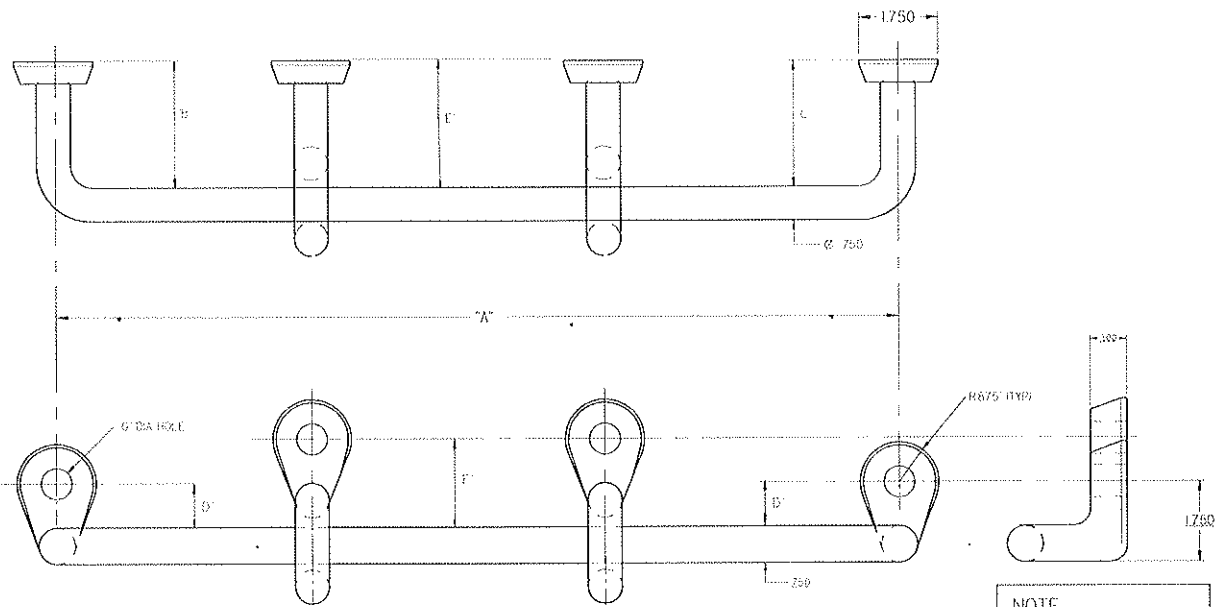
NOTE
 IF YOU REQUIRE DIMS.
 NOT SHOWN PLEASE
 FURNISH MARKED
 DRAWING

TOLERANCE +.0025
 UNLESS OTHERWISE
 NOTED

PART NO.	DIM "A"	DIM "B"	DIM "C"	DIM "D"	DIM "E"	DIM "F"	DIM "G"	DIM "H"	DIM "I"	DIM "J"
D017803-21	21"	4-1/4"	3-1/2"	3"	3"	5"	1-3/4"	4-1/4"	1-3/4"	1 1/16"

PAGE J - 16

PENNSYLVANIA RAIL CAR CO.	
HANDHOLD - (QUAD BEND)	
DWG NO.	D017803
PART NO.	SEE TABLE



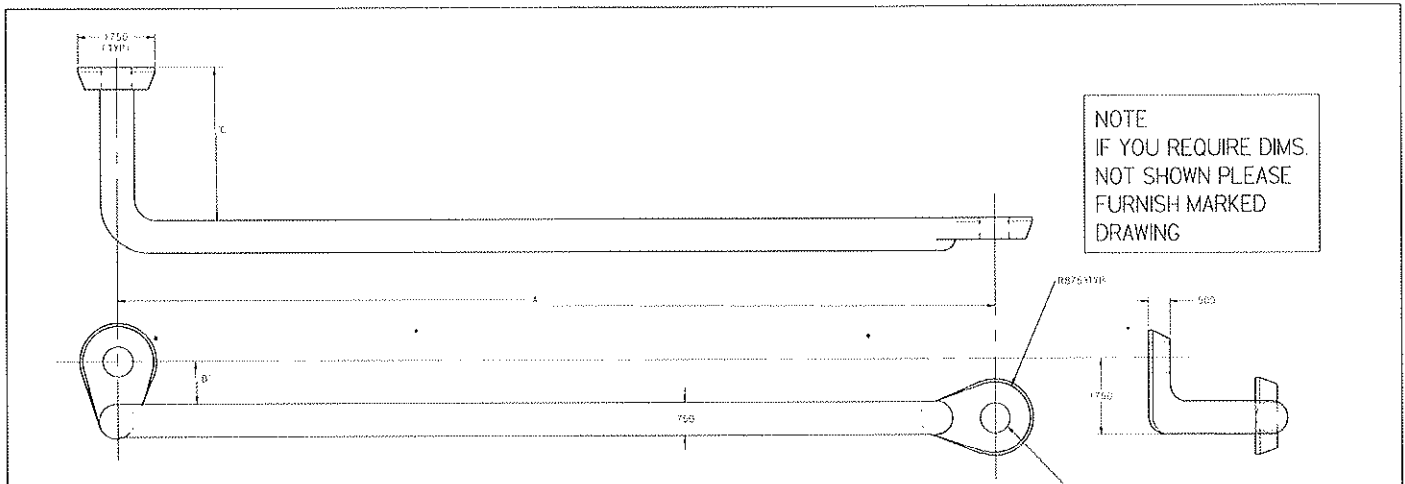
MATERIAL SPEC.
 .750" DIA. ROUND BAR
 ASTM A-576 GR.1015-1020

NOTE
 IF YOU REQUIRE DIMS.
 NOT SHOWN PLEASE
 FURNISH MARKED
 DRAWING

PART NO	DIM "A"	DIM "B"	DIM "C"	DIM "D"	DIM "E"	DIM "F"	DIM "G"	ITEM#1
A017850-76S2	76"	3"	3"	1"	3"	1-7/8"	11/16"	D017737-2
A017850-76.6S4	76-5/8"	2-1/2"	2-1/2"	1"	2-1/2"	1-7/8"	11/16"	D017737-4
A017850-77S2	77"	3"	3"	1"	3"	1-7/8"	11/16"	D017737-2
A017850-77AS2	77"	5-1/2"	5-1/2"	1"	3"	1-7/8"	11/16"	D017737-2
A017850-84S17	84"	2-1/2"	2-1/2"	1"	2-1/2"	1-13/16"	9/16"	D017737-17
A017850-95S1	95"	5-1/2"	6-1/2"	1"	6-1/4"	1"	11/16"	D026301-1

TOLERANCE ±.0625"
 UNLESS OTHERWISE
 NOTED

PENNSYLVANIA RAIL CAR CO	
HANDHOLD - SINGLE BEND w/2 CENTER SUPPORTS	
DWG NO	017850
REV	SEE TITLE



NOTE
IF YOU REQUIRE DIMS.
NOT SHOWN PLEASE
FURNISH MARKED
DRAWING

PART NO.	DIM "A"	DIM "B"	DIM "C"	DIM "D"	PART NO.	DIM "A"	DIM "B"	DIM "C"	DIM "D"
D028186-17	17"	1"	3"	11/16"	D028186-19D	19"	1"	2-1/2"	11/16"
D028186-17A	17"	1"	2"	11/16"	D028186-19E	19"	1"	2-15/16"	11/16"
D028186-17B	17"	1-1/2"	2-1/4"	11/16"	D028186-19F	19"	1"	2"	11/16"
D028186-18	18"	1"	2"	11/16"	D028186-19G	19"	1"	2-3/4"	11/16"
D028186-18.5	18-1/2"	1"	2-1/4"	11/16"	D028186-19S	19-1/2"	1"	3"	11/16"
D028186-18.5A	18-1/2"	1"	2-1/2"	11/16"	D028186-19SA	19-1/2"	1"	3-1/8"	11/16"
D028186-18.5B	18-1/2"	1"	2-3/4"	9/16"	D028186-19SB	19-1/2"	1"	3-7/16"	11/16"
D028186-18.5C	18-1/2"	1"	2"	11/16"	D028186-19SC	19-1/2"	1"	3-3/4"	11/16"
D028186-18.5D	18-1/2"	1"	2-3/4"	11/16"	D028186-19SD	19-1/2"	1"	4-1/4"	11/16"
D028186-18.5E	18-1/2"	1"	3"	11/16"	D028186-20	20"	1"	2-1/2"	9/16"
D028186-18.5F	18-1/2"	1"	4"	11/16"	D028186-20A	20"	1"	4-1/8"	11/16"
D028186-18.625	18-5/8"	1"	2-3/4"	11/16"	D028186-28	28"	1"	5"	11/16"
D028186-18.75	18-3/4"	1"	3"	11/16"	D028186-97	97"	1"	3-1/2"	11/16"
D028186-18.875	18-7/8"	1"	2-1/2"	9/16"	D028186-97.5	97-1/2"	1"	2"	11/16"
D028186-19	19"	1"	3"	11/16"					
D028186-19A	19"	1"	2-15/16"	9/16"					
D028186-19B	19"	1"	2-5/16"	11/16"					
D028186-19C	19"	1"	3-3/8"	11/16"					

MATERIAL SPEC.
.750" DIA. ROUND BAR
ASTM A-576 GR.1015-1020

TOLERANCE: +.0625"
UNLESS OTHERWISE
NOTED

PENNSYLVANIA RAIL CAR CO.	
HANDHOLD	
(STYLE 3R)	